

Applications

BUBBLE fills an significant gap in the market for professionals, athletes and amateurs practicing extreme sports and activities:



Central Office
26 Vasil Kanchev Str.,
entrance C floor 4, office 20,
1510 Sofia, Bulgaria

Phone: +359 (2) 988 3537
Fax: +359 (2) 986 6224
Web: www.lomini.com

Production base
Promishlena zona,
18 Nikola Vaptsarov Str.,
3000 Vratsa, Bulgaria

Phone: +359 88 4274 057
Email: lomini@lomini.com
Web: http://toolshop.lomini.com/



BUBBLE

SYSTEM FOR ATTACHING AN ACTION CAMERA TO A SAFETY HELMET



BUBBLE

Model GP

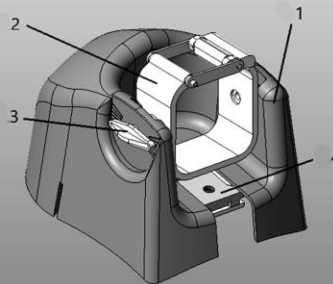
The **BUBBLE** system is innovative system for attaching an action camera to a safety helmet. The innovative features of the product are the result of a unique technical solution, protected by a registration certificate for utility model from Patent office of Republic of Bulgaria.

BUBBLE has a safety function by protecting the body of the camera from mechanical damage in the event of falling or impacting objects. The design of the Bubble ensures easy shooting direction change, turning on/switching off and it is suitable for large percentage of existing professional and sports helmets on the market.

Model GP of the Bubble is compatible with GoPro Hero Session, Hero 5 Session, Polaroid Cube, Cube+ and etc.

Elements of BUBBLE

1. Shell - encloses the camera entirely by preventing the hanging of external objects such as ropes, branches and etc.
2. Holder - grips the camera to the shell in a way to allow its tilting and fixing in the direction of shooting
3. Locking lever - fixing the holder and allows repeatability of the position by additional indication of the shooting angle
4. Latch - fixing the Bubble to the helmet



Benefits of BUBBLE GP

The **aerodynamic form** of the Bubble significantly reduces the risk of entanglement of the parachute hanging ropes when it is opened. The shell of the Bubble fits perfectly to the surface of the helmet. The holder allows to tilt the camera in the desired direction and the locking lever allows repeatability of the position by additional indication.

Bubble is made of durable plastic resistant to atmospheric conditions and UV rays. It provides extra protection for the camera from falling objects, branches and others that may damage the camera

It is perfect for people in the extreme sports no matter if you are professional, athlete or just amateur extreme lover. With Bubble you have improved safety, aerodynamics and better camera shooting precision.





